

INTERNATIONAL SOCIAL SERVICE

*100th Anniversary
Dinner*

OCTOBER 10 2024

BÂTIMENT DES FORCES MOTRICES
GENEVA



SPONSORSHIP PROPOSAL

WE INVITE YOU TO BECOME OUR PARTNER AND JOIN US FOR THIS SPECIAL EVENING.

MIGRATION. SOCIAL INCLUSION. INTEGRATION.

WHEN OCTOBER 10, 6:30 PM
WHERE GENEVA, BÂTIMENT DES FORCES
MOTRICES

- UP TO 450 GUESTS: ISS WORLDWIDE PEOPLE AND PARTNERS
- WELCOME & KEYNOTE SPEECHES
- SOCIALLY RESPONSIBLE EVENING
- SILENT AUCTION WITH HANDCRAFTED ITEMS FROM MORE THAN 40 COUNTRIES
- DIVERSE ARTISTIC PERFORMERS

80% OF TICKET RECEIPTS WILL
CONTRIBUTE
TO FINANCING
2022-2025
ISS TRANSFORMATION TARGETS

WWW.100YEARSISS.ORG



100 YEARS OF CHILD PROTECTION ALONG MIGRATION ROUTES

- We are an international NGO **founded 100 years ago, in 1924, in Geneva. International Social Service (ISS)** is organised as a network of national entities that assists children and families confronted with complex social problems as a result of migration.
- ISS provides **psychosocial and legal assistance** to families and children separated by borders.
- **ISS protects children placed** in vulnerable situations or deprived of their families.
- **ISS evaluates national child protection** frameworks.
- **ISS** advocates for law and policy development in line with the best interests of the child.
- **ISS provides multidisciplinary support** to adoptees, adoptive and birth families, including search for origins.
- **ISS offers training and provides technical assistance** to child protection professionals.



KEY FIGURES



75'000 families/year assisted worldwide



Active in
120 countries



600+ social workers, lawyers and caregiving professionals



20 staff, volunteers and interns in Geneva



Budget ISS Global
55 million \$
Budget ISS Secretariat
1.4 million \$



ISS IS ALL ABOUT



Restoring Links

For 100 years, ISS has been developing ecosystems allowing children and their families to be protected and reunited through time and across borders.

ISS has built a global network of members to address the needs of cross border social services through international and regional cooperation.

It is the strength of this global network that has reunited children with their families across the world.

Pioneer Advocacy

Solidly anchored on national levels through its worldwide network and community of social workers, ISS has been at the forefront of a changing social panorama, tackling complex challenges and real-life situations around child protection, childrens' rights, family reunification and mediation, and much more.

As a result, since 1924 and ever since, ISS has contributed to the development of international private and public law.



Women Explorers

Celebrating the women who founded ISS and the women who are leading ISS now.

It is in Geneva that ISS was founded by a handful of women. Facing the challenges of post World War I migrations, they recognised the need for coordinated action between countries to ease the passage of those travelling to unfamiliar lands. The idea of an international migration agency was born.

2022 - 2025 ISS TRANSFORMATION TARGETS

To best serve, ISS strives to improve its efficiency by leveraging technology, networks and knowledge development.

Target 1 Network Development and Training to consolidate ISS worldwide presence.

Target 2 Knowledge and Research Platform to support ISS global advocacy.

Target 3 Integrating Artificial Intelligence capabilities to enhance social work service delivery.

Target 4 Measuring Social Impact to enhance competitiveness and accountability.

Target 5 Strengthening External Communications to make ISS more visible and attractive to donors.



SPONSORSHIP PROPOSAL

PARTNER

50 000 CHF

- 2 TABLES* AT ANNIVERSARY DINNER
- BRIEF PRESENTATION AT DINNER
- 1 PAGE AD IN THE ANNIVERSARY DINNER BOOKLET
- LOGO ON ISS PUBLICATIONS
- 2 SOCIAL MEDIA POSTS
- MEETING WITH ISS STAFF
- ANNUAL COCKTAIL OF ISS PARTNERS
- LOGO ON THANK YOU BANNER
- FREE LINK TO E-BOOK

AMBASSADOR

35 000 CHF

- 1,5 TABLES* AT ANNIVERSARY DINNER
- HALF-PAGE AD IN THE ANNIVERSARY DINNER BOOKLET
- ANNUAL COCKTAIL OF ISS PARTNERS
- LOGO ON THANK YOU BANNER
- FREE LINK TO E-BOOK

FRIEND

25 000 CHF

- 1 TABLE* AT ANNIVERSARY DINNER
- 1/4 PAGE AD IN THE ANNIVERSARY DINNER BOOKLET
- ANNUAL COCKTAIL OF ISS PARTNERS
- LOGO ON THANK YOU BANNER
- FREE LINK TO E-BOOK

SUPPORTER

15 000 CHF

- HALF A TABLE* AT ANNIVERSARY DINNER
- LOGO OR NAME IN THE ANNIVERSARY DINNER BOOKLET
- ANNUAL COCKTAIL OF ISS PARTNERS
- LOGO ON THANK YOU BANNER
- FREE LINK TO E-BOOK

FAN

5 000 CHF

- 2 SEATS AT ANNIVERSARY DINNER
- LOGO OR NAME IN THE ANNIVERSARY DINNER BOOKLET
- ANNUAL COCKTAIL OF ISS PARTNERS
- LOGO ON THANK YOU BANNER
- FREE LINK TO E-BOOK

*1 TABLE HAS 10 SEATS

CONTACT US AT ISS100@ISS-SSI.ORG

HAVE OTHER SPONSORSHIP IDEAS? WE ARE OPEN TO SUGGESTIONS.

ARTISTIC PERFORMERS



ISS GENERAL SECRETARIAT TEAM



Jean Ayoub
ISS CEO / Secretary General



Fanny Baert
COO - Director
Communications
& Talent



Sabina Titarenko
Director Network
Development
& Partnerships



Marie Jenny
Director
Alternative Care
Programs



**Jeannette
Wöllenstein-Tripathi**
Director
International
Reference Center



**Mauricio
Garcés Sepúlveda**



Carlotta Alloero



**Juliette
Duchesne-Roulez**



Beatriz Santaemilia



Giovanna Ricciardi



Margherita Ronconi



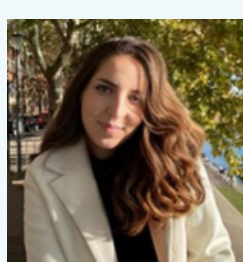
Ehab Iwidat



**Sonia Liliana
Almenarez**



Khadijah Madihi



Alysse Rochon



Katerina Yarova



Olivier Geissler



Houda Samadi

PROUD TO BE TRUSTED BY



ERNST GÖHNER STIFTUNG



Fondation ABOUZEID



fondation sesam



Better
Care
Network

unicef | for every child

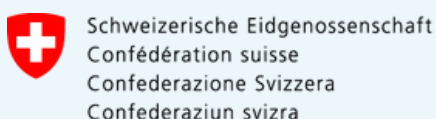


VILLE DE
GENÈVE



RAPHA
INTERNATIONAL

fondation
BOTNAR



pennyappeal.org

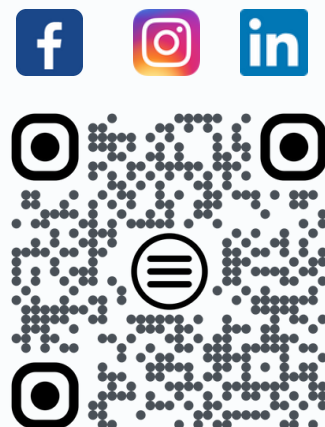
+20 Governments
and many
private donors
wishing to
remain
anonymous

THANK YOU

**International Social Service
General Secretariat**

ISS100@ISS-SSI.ORG

+41 22 906 77 00
www.iss-ssi.org
www.100yearsiss.org





HISTORIC MILESTONES

1924

The **International Migration Service** (IMS) was established as a separate international entity with headquarters in Geneva. The International Social Service (ISS) was mentioned as an alternative name and came into effect after WWII.



1961

ISS leaders represented ISS on UN Committees on Refugees, Human Rights and Status of Women. ISS gained **consultative status with the Council of Europe**.

1963

ISS prepared a report and contributed to the drafting of the **Hague Convention on Protection of Children and Co-operation in Respect of Intercountry Adoption**.



2000

ISS celebrated its 75th anniversary with a leading theme: "**Young People in Migration**- in historical context".

2016

ISS organised an international conference on **Alternative Care** in Geneva with 400 participants and over 30 leading experts in plenaries and three working languages.

1945 -1955

The network of ISS expanded to include **new members** and partners in Europe, Latin American, Asia and the Pacific.



1978

1978 was designed International Year of the Child, and to celebrate that occasion, ISS published a book "**The effects of Migration on Families and Children**".

1994

The **International Reference Centre for the rights of children deprived of their families (ISS/IRC)**, was established as a programme at the ISS General Secretariat.

2008

ISS contributed to the drafting of **Guidelines for the Alternative Care of Children**, submitted to the UN General Assembly. The Guidelines were formally endorsed by the UN General Assembly on 20 November 2009.

2023

ISS counts **38 members, 2 regional offices** and many members to be with ISS activities now reaching 120 countries.

2024

100th Anniversary