

INTERNATIONAL SOCIAL SERVICE

*100th Anniversary
Dinner*

OCTOBER 10 2024
CROWNE PLAZA HOTEL
GENEVA



SPONSORSHIP PROPOSAL

**WE INVITE YOU TO BECOME
OUR PARTNER AND
JOIN US FOR THIS SPECIAL EVENING.**

MIGRATION. SOCIAL INCLUSION. INTEGRATION.

WHEN OCTOBER 10, 7 PM

WHERE GENEVA, CROWNE PLAZA HOTEL

- **240 GUESTS:** ISS WORLDWIDE PEOPLE AND PARTNERS
- **WELCOME & KEYNOTE SPEECHES**
- **SOCIALLY RESPONSIBLE EVENING**
- **DIVERSE ARTISTIC PERFORMERS**

**MEET OUR SPECIAL GUESTS:
DIDA HUIGAN AND HANNI ABBAS**

**TICKETS RECEIPTS WILL ALLOW US
TO CONTINUE THE WORK WE
STARTED 100 YEARS AGO.**

WWW.100YEARSISS.ORG



100 YEARS OF CHILD PROTECTION ALONG MIGRATION ROUTES

- We are an international NGO **founded 100 years ago, in 1924, in Geneva. International Social Service (ISS)** is organised as a network of national entities that assists children and families confronted with complex social problems as a result of migration.
- ISS provides **psychosocial and legal assistance** to families and children separated by borders.
- **ISS protects children placed** in vulnerable situations or deprived of their families.
- **ISS evaluates national child protection** frameworks.
- **ISS** advocates for law and policy development in line with the best interests of the child.
- **ISS provides multidisciplinary support** to adoptees, adoptive and birth families, including search for origins.
- **ISS offers training and provides technical assistance** to child protection professionals.



KEY FIGURES



75'000 families/year assisted worldwide



Active in **120 countries**



600+ social workers, lawyers and caregiving professionals



20 staff, volunteers and interns in Geneva



Budget ISS Global
55 million \$
Budget ISS Secretariat
1.4 million \$



ISS IS ALL ABOUT



Restoring Links



For 100 years, ISS has been developing ecosystems allowing children and their families to be protected and reunited through time and across borders.

ISS has built a global network of members to address the needs of cross border social services through international and regional cooperation.

It is the strength of this global network that has reunited children with their families across the world.

Pioneer Advocacy

Solidly anchored on national levels through its worldwide network and community of social workers, ISS has been at the forefront of a changing social panorama, tackling complex challenges and real-life situations around child protection, childrens' rights, family reunification and mediation, and much more.

As a result, since 1924 and ever since, ISS has contributed to the development of international private and public law.



Women Explorers

Celebrating the women who founded ISS and the women who are leading ISS now.

It is in Geneva that ISS was founded by a handful of women. Facing the challenges of post World War I migrations, they recognised the need for coordinated action between countries to ease the passage of those travelling to unfamiliar lands. The idea of an international migration agency was born.

2022 - 2025 ISS TRANSFORMATION TARGETS

To best serve, ISS strives to improve its efficiency by leveraging technology, networks and knowledge development.

Target 1 Network Development and Training to consolidate ISS worldwide presence.

Target 2 Knowledge and Research Platform to support ISS global advocacy.

Target 3 Integrating Artificial Intelligence capabilities to enhance social work service delivery.

Target 4 Measuring Social Impact to enhance competitiveness and accountability.

Target 5 Strengthening External Communications to make ISS more visible and attractive to donors.



SPONSORSHIP PROPOSAL

PARTNER

30 000 CHF

- 3 TABLES AT ANNIVERSARY DINNER
- BRIEF PRESENTATION AT DINNER
- 1 PAGE AD IN THE ANNIVERSARY DINNER BOOKLET
- LOGO ON ISS PUBLICATIONS
- 2 SOCIAL MEDIA POSTS
- MEETING WITH ISS STAFF
- ANNUAL COCKTAIL OF ISS PARTNERS
- LOGO ON THANK YOU BANNER
- FREE LINK TO E-BOOK

AMBASSADOR

20 000 CHF

- 2 TABLES AT ANNIVERSARY DINNER
- HALF-PAGE AD IN THE ANNIVERSARY DINNER BOOKLET
- ANNUAL COCKTAIL OF ISS PARTNERS
- LOGO ON THANK YOU BANNER
- FREE LINK TO E-BOOK

FRIEND

10 000 CHF

- 1 TABLE AT ANNIVERSARY DINNER
- 1/4 PAGE AD IN THE ANNIVERSARY DINNER BOOKLET
- ANNUAL COCKTAIL OF ISS PARTNERS
- LOGO ON THANK YOU BANNER
- FREE LINK TO E-BOOK

CONTACT US AT ISS100@ISS-SSI.ORG

HAVE OTHER SPONSORSHIP IDEAS? WE ARE OPEN TO SUGGESTIONS.

ARTISTIC PERFORMERS



ISS GENERAL SECRETARIAT TEAM



Jean Ayoub
ISS CEO / Secretary General



Fanny Baert
COO - Director
Communications
& Talent



Sabina Titarenko
Director Network
Development
& Partnerships



Marie Jenny
Director
Alternative Care
Programs



**Jeannette
Wöllenstein-Tripathi**
Director
International
Reference Center



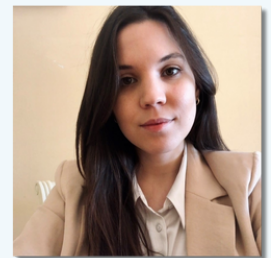
**Mauricio
Garcés Sepúlveda**



Carlotta Alloero



Khadijah Madihi



Beatriz Santaemilia



Giovanna Ricciardi



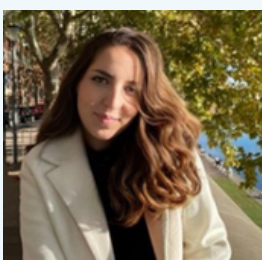
Margherita Ronconi



Ehab Iwidad



**Sonia Liliana
Almenarez**



Alysse Rochon



Katerina Yarova

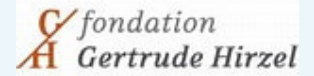


Olivier Geissler



Houda Samadi

PROUD TO BE TRUSTED BY



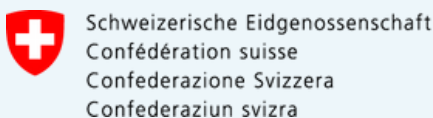
ERNST GÖHNER STIFTUNG



Fondation ABOUZEID



unicef for every child



pennyappeal.org



+20 Governments and many private donors wishing to remain anonymous

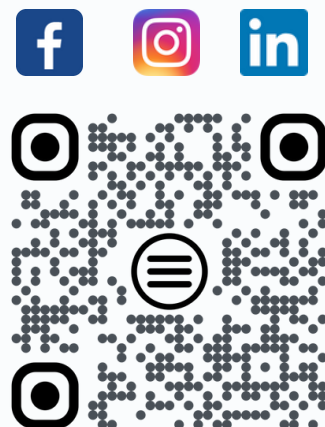
THANK YOU

**International Social Service
General Secretariat
32, quai du Seujet
1201 Geneva**

ISS100@ISS-SSI.ORG

+41 22 906 77 00
www.iss-ssi.org
www.100yearsiss.org

**IBAN: CH5800279279C01457310
BIC: UBSWCHZH80A**





HISTORIC MILESTONES

1924

The **International Migration Service** (IMS) was established as a separate international entity with headquarters in Geneva. The International Social Service (ISS) was mentioned as an alternative name and came into effect after WWII.



1961

ISS leaders represented ISS on UN Committees on Refugees, Human Rights and Status of Women. ISS gained **consultative status with the Council of Europe**.

1963

ISS prepared a report and contributed to the drafting of the **Hague Convention on Protection of Children and Co-operation in Respect of Intercountry Adoption**.



2000

ISS celebrated its 75th anniversary with a leading theme: "**Young People in Migration**- in historical context".

2016

ISS organised an international conference on **Alternative Care** in Geneva with 400 participants and over 30 leading experts in plenaries and three working languages.

1945 -1955

The network of ISS expanded to include **new members** and partners in Europe, Latin American, Asia and the Pacific.



1978

1978 was designed International Year of the Child, and to celebrate that occasion, ISS published a book "**The effects of Migration on Families and Children**".

1994

The **International Reference Centre for the rights of children deprived of their families (ISS/IRC)**, was established as a programme at the ISS General Secretariat.

2008

ISS contributed to the drafting of **Guidelines for the Alternative Care of Children**, submitted to the UN General Assembly. The Guidelines were formally endorsed by the UN General Assembly on 20 November 2009.

2023

ISS counts **38 members, 2 regional offices** and many members to be with ISS activities now reaching 120 countries.

2024

100th Anniversary